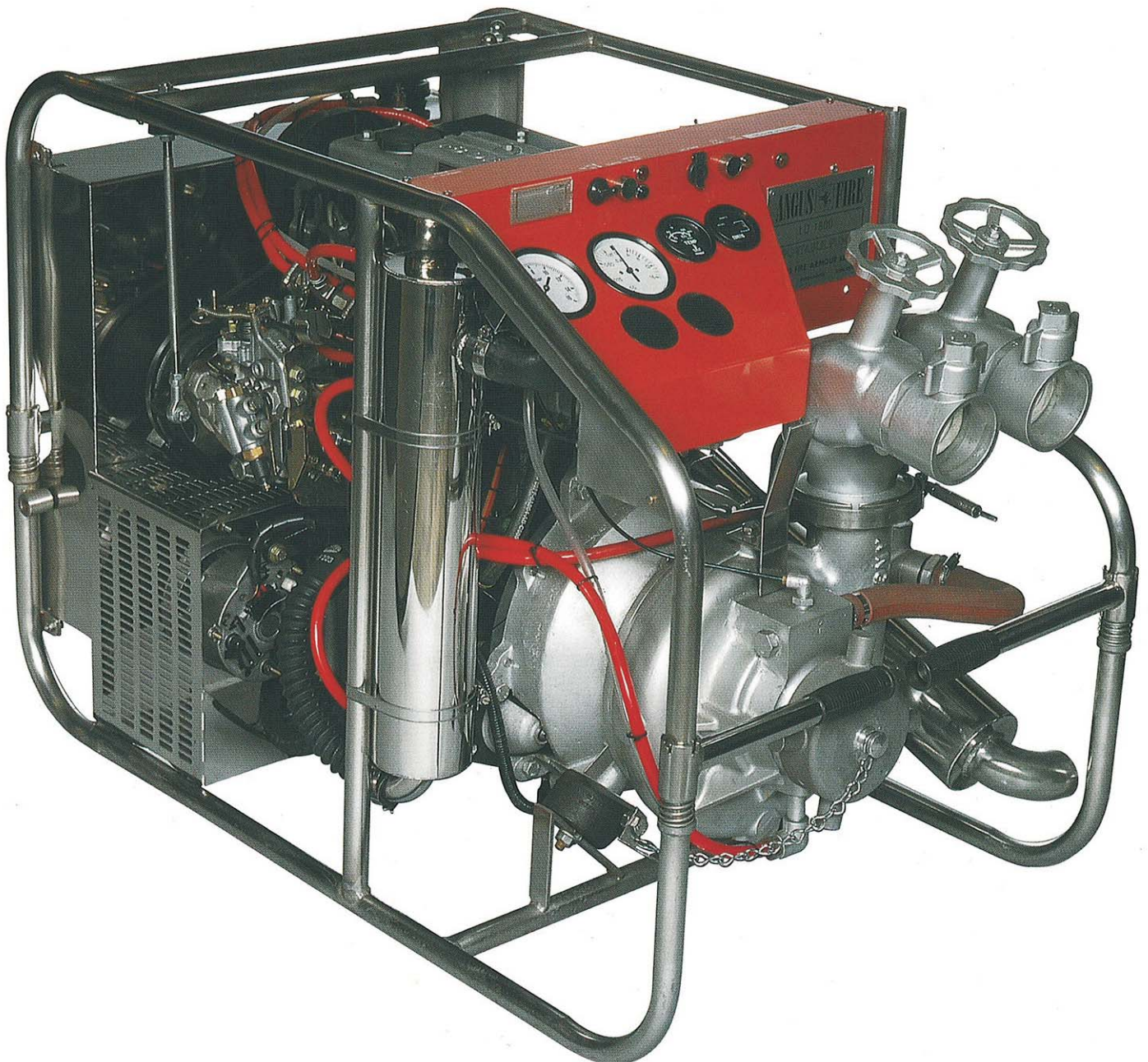


**ANGUS  
FIRE**



# LD 1800 LIGHTWEIGHT DIESEL PORTABLE FIRE PUMP



# LD1800 LIGHTWEIGHT DIESEL PORTABLE FIRE PUMP

## Features

- Ford diesel engine power unit offers reliability and worldwide spares availability.
- Stainless steel used widely for good corrosion resistance, low maintenance and long life.
- Swivelling outlets allow hose to be directed where needed without kinks.
- Stainless steel exhaust eject primer gives fast efficient priming with excellent corrosion resistance.
- Robust inlet strainer prevents stone damage to impeller.
- Panel light allows for easy monitoring at night.

## General

The LD1800 is the natural choice for a portable pump where petrol is not used for safety reasons and where the electrical ignition system on petrol driven units would be vulnerable in a hostile environment.

## Engine

A Ford diesel engine powers the pump.

The fuel tank capacity is 31 litres (7 imp.gals) allowing approximately 3 hours running at 60% load.

## Cooling System

A closed circuit heat exchanger gives reliable cooling in all climatic conditions and enables antifreeze to be used in cold conditions.

## Electrical System

Easy starting is provided at all times with the use of a large capacity, 12 volt, "freedom" battery coupled with an electric starter and alternator. An electric socket may be used to trickle charge the battery or as a power take-off for the optional lighting mast.

## Pump

The pump is constructed in corrosion-resistant light alloy and supported on a two-bearing stainless steel shaft for maximum working life. A gunmetal option is available for unusually arduous conditions. A suction filter is fitted for hydrant operation.

Connections can be provided to suit any suction or delivery format. Swivelling outlets give choice of direction for discharge and prevent hoses from kinking.

## Priming

Effective priming gives rapid water lift up to 7.3 metres (24'). Only one moving part ensures that operation is free from clogging and mechanical problems associated with pistons and ring primers.

## Gauges and Controls

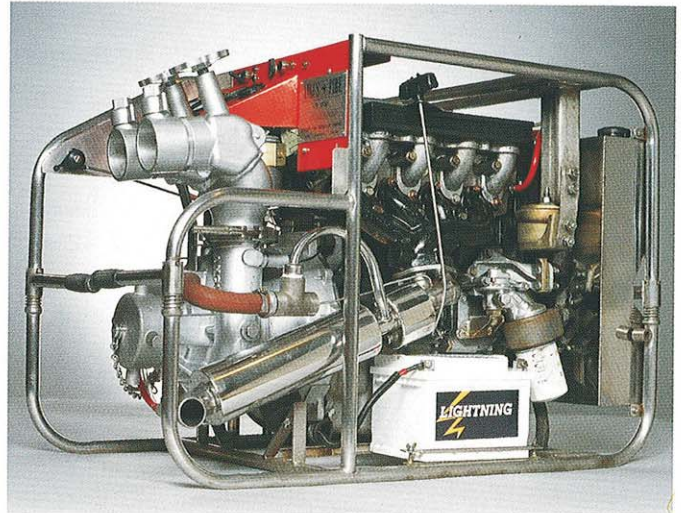
All gauges and controls can be operated from one work station well clear of hoses and exhaust.

## Construction

Components in the front line of corrosive attack are constructed in stainless steel for maximum service life – including the frame, heat exchanger, exhaust pump shaft and outlet control clamp.

## Optional Equipment

1. A transporter can be fitted and pulled by one person.
2. Solid or inflatable tyres can be fitted.
3. Twin lamp lighting mast to illuminate area of operation.
4. All Angus pumps can be fitted to Angus Type 20 Trailers.
5. Additional instrumentation can be provided on request.

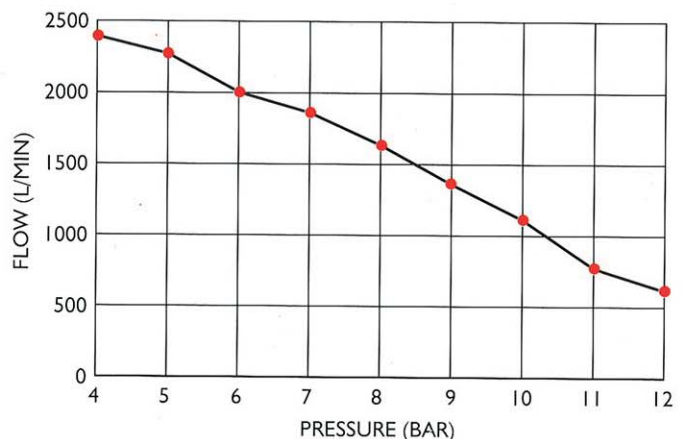


## Shipping Specification

Length:	1030mm
Width:	610mm
Height:	740mm
Fuel Tank Capacity:	31 litres (7 imp.gals)
Weight (Dry):	252kg Approx.

### Typical performance at 3 metre suction lift

PRESSURE (Bar)	FLOW (L/Min)	RPM
4	2444	3775
5	2280	3843
6	2015	3970
7	1873	4056
8	1639	4166
9	1376	4300
10	1102	4433
11	765	4629
12	591	4789



The right is reserved to vary or modify any specification without prior notice.

REF. 5146/2 © Angus Fire Armour Limited 05.01 Printed in England

